

Fire and Rescue

Mission:

The mission of the Rio Rancho Fire Rescue Department is to work in partnership with the community, to protect life and property, and to enhance the quality of life in our city.



Primary Services:

- To provide for emergency medical and rescue services;
- To extinguish accidental or destructive fires and to prevent the occurrence and spread of such fires;
- To enforce all fire prevention regulations and all other ordinances and laws within the competence of the Department;
- To review all building plans to ensure adherence to all fire prevention methods and procedures;
- To provide public education and safety demonstrations;
- To provide proactive outreach to citizens currently in need of social services not provided by the department;
- To train Citizen Emergency Response Team (CERT)

FY18 Department Goals by City Strategic Goal

Strategic Goal: Safety

- Improve and expand delivery of RioCares community outreach program.
- All FTE's to complete and certify as an IFSAC (International Fire Service Accreditation Congress) Firefighter-II.
- Develop long-term plan for relocating of department's training grounds. Potential of combining with other city departments in an effort to leverage funding resources.
- Develop training plan for all classes in career progression matrix.
- Implement telemedicine program (allows face-to-face consultation with physician from scenes).
- Apply to NM Municipal League for Fire Department accreditation when implemented in CY18.
- Develop and initiate new program for tracking and monitoring all equipment, supplies, apparatus, and uniforms.
- Develop electronic tracking system for equipment loss and damage.
- Complete three CERT courses.
- Provide Incident Command System training (ICS 300 & 400), required Rio Rancho personnel, and neighboring departments.
- Provide two Emergency Operations Center exercises for Emergency Operations Center staff to practice responding to a large scale incident to better prepare the City to respond and recover from a disaster. This will include a coordinated exercise with Intel, and the 64th Civil Support Team and the Rio Grande Basin Heavy Technical Rescue Team.
- Expand CERT Fire Rehab program to allow deployment to large incidents within the region, including Sandoval County, Corrales, and Town of Bernalillo.



FY17 Department Accomplishments by City Strategic Goal*

Strategic Goal: Public Safety Services

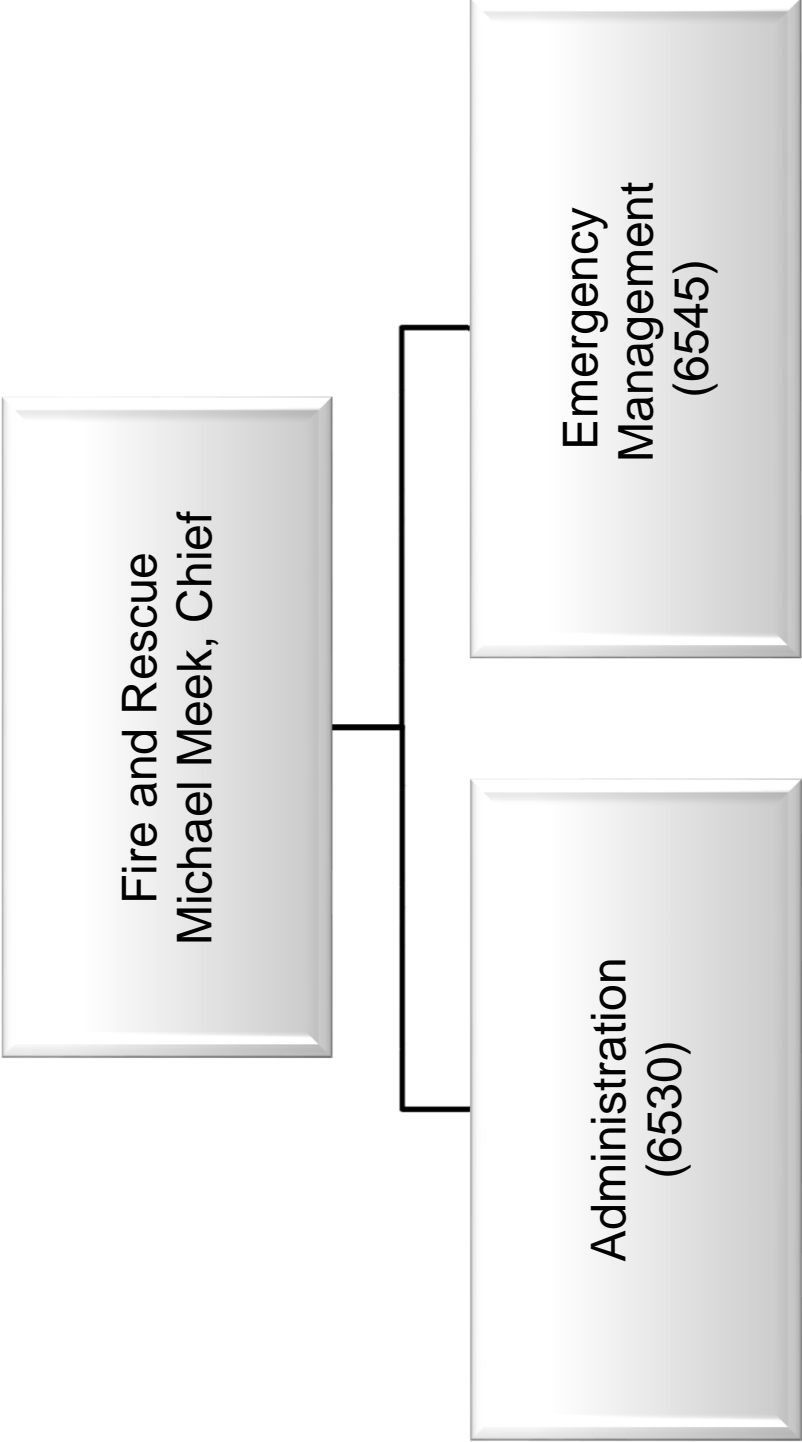
- All MOS completed the skills assessment portion of the Hazmat Awareness/Operations level class
- Fully implemented on-duty Paramedic Supervisor position to provide medical oversight and specialized medical care on critical medical incidents.
- Expanded the department's community outreach program (RioCares), to include coordination with medical insurance providers, local hospitals, and other medical agencies.
- Completed minor living quarter updates at Stations 3, and 6.
- Completed design of living quarter updates at Station 5.



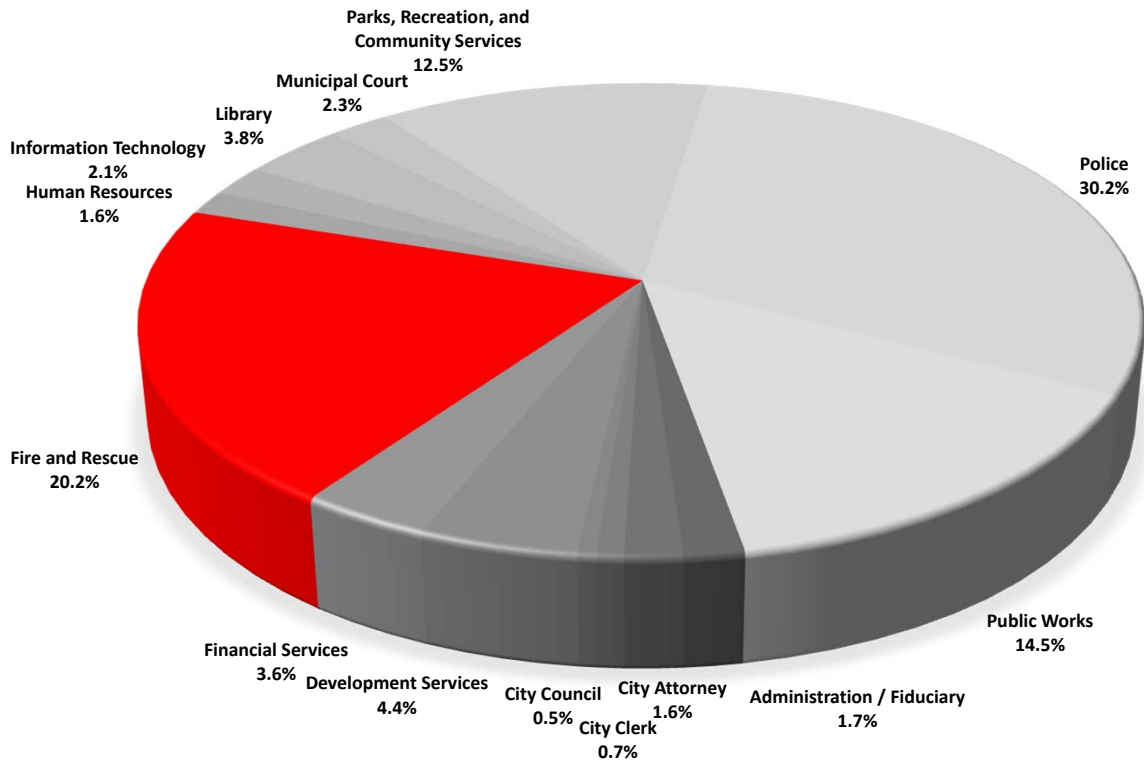
- Completed three CERT courses.
- Provided two Incident Command System trainings (ICS 300 & 400), required courses Rio Rancho emergency response personnel.
- Rio Rancho Emergency Management completed two Emergency Operations Center exercises in FY17, one functional exercise and one table top exercise, to better prepare the City to respond and recover from an extended electrical outage.
- Offered CERT Fire Rehab program to allow deployment to large incidents within the region, including Sandoval County, Corrales, and Town of Bernalillo.

**Strategic Plan updated in 2017. Prior year goals and accomplishments reference previous strategic plan. For details refer to FY17 documents.*

FIRE AND RESCUE ORGANIZATIONAL STRUCTURE



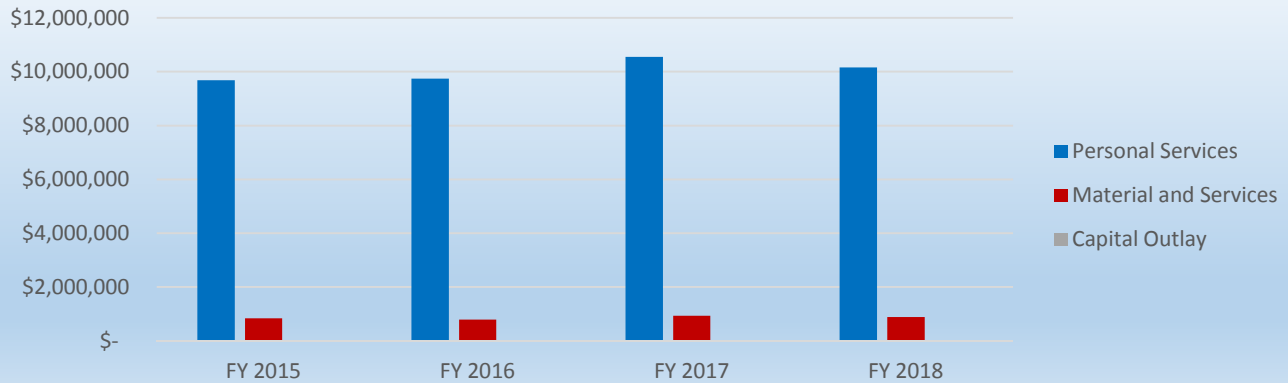
Fire and Rescue
FY18 Budget \$11,076,051



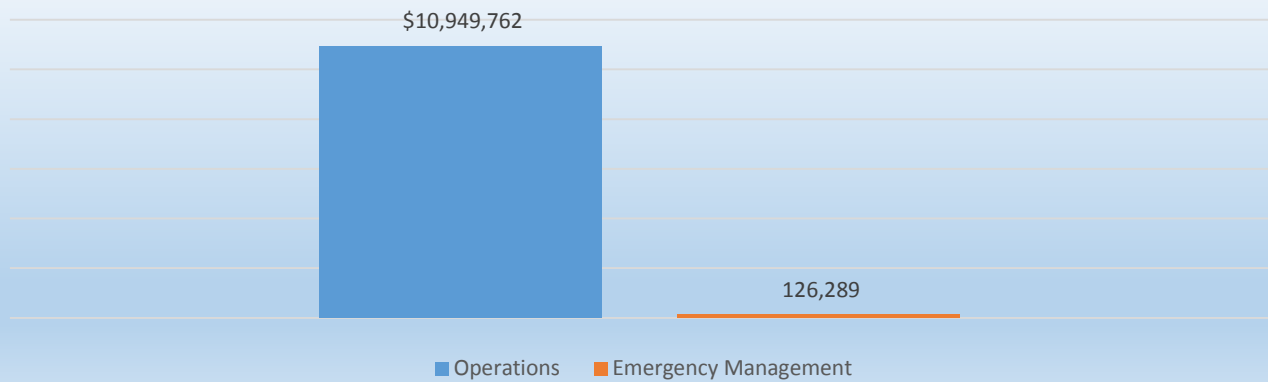
**FIRE AND RESCUE
BUDGET SUMMARY
FISCAL YEAR 2017-2018**

| <i>Object of Expenditures</i> | FY 2015 Actual | FY 2016 Actual | FY 2017 Actual | FY 2018 Adopted |
|-----------------------------------|-------------------|-------------------|-------------------|----------------------|
| General Fund | | | | |
| Personal Services | \$ 9,685,337 | \$ 9,745,876 | \$ 10,552,910 | \$ 10,155,426 |
| Material and Services | 840,458 | 794,364 | 937,160 | 886,125 |
| Capital Outlay | 14,144 | 25,448 | 8,000 | 34,500 |
| Total | 10,539,939 | 10,565,688 | 11,498,070 | 11,076,051 |
| Expenditure by Cost Center | | | | |
| Cost Center | | | | |
| Operations | \$ 10,430,736 | \$ 10,467,191 | \$ 11,374,676 | \$ 10,949,762 |
| Emergency Management | 109,203 | 98,497 | 123,394 | 126,289 |
| Total | 10,539,939 | 10,565,688 | 11,498,070 | 11,076,051 |

Budget by Type of Expenditure

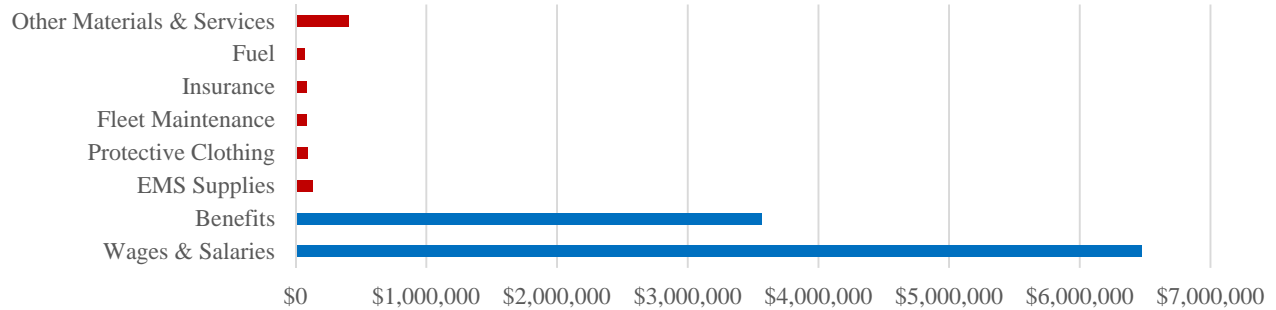


Expenditures by Cost Center



Fire and Rescue Operations (6530)

FY18 Major Expenditures / Fire Operations

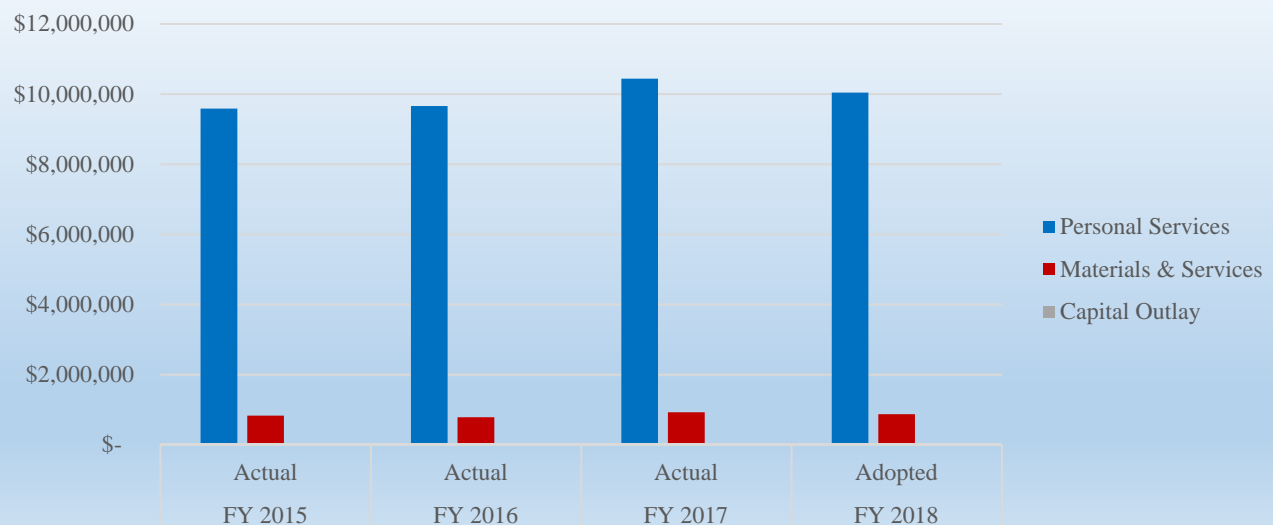


| | FY 2015 Actual | FY 2016 Actual | FY 2017 Actual | FY 2018 Adopted | % Change |
|----------------------|----------------------|----------------------|----------------------|----------------------------|-------------|
| Personal Services | \$ 9,587,197 | \$ 9,657,728 | \$ 10,439,928 | \$ 10,041,429 | -4% |
| Materials & Services | 829,395 | 784,015 | 926,748 | 873,833 | -6% |
| Capital Outlay | 14,144 | 25,448 | 8,000 | 34,500 | |
| Total | \$ 10,430,736 | \$ 10,467,191 | \$ 11,374,676 | \$ 10,949,762 | -4% |

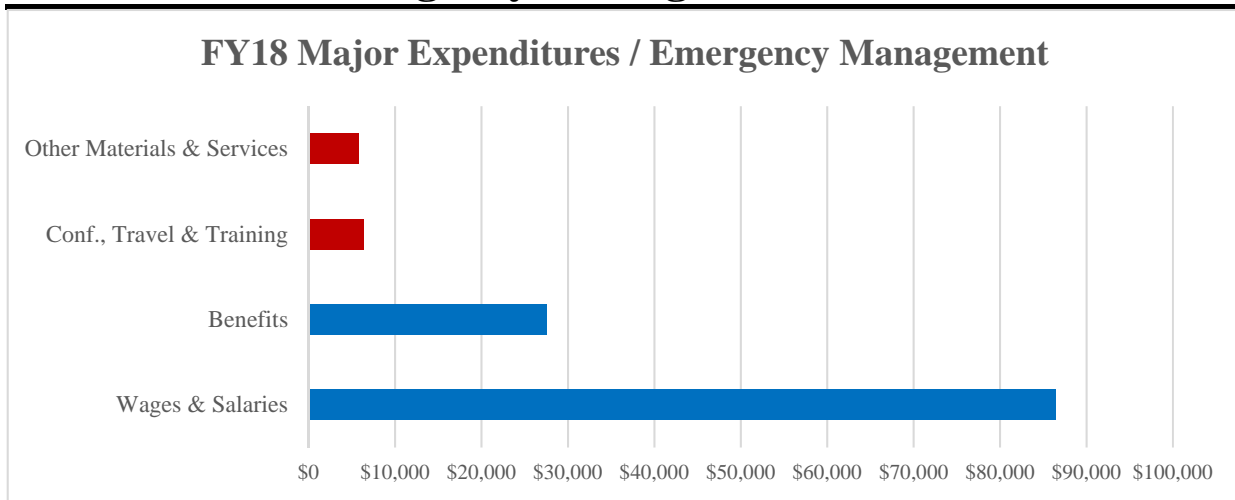
| Positions Approved* | 104 | 105 | 104 | 104 | 0% |
|---------------------|-----|-----|-----|------------|----|
|---------------------|-----|-----|-----|------------|----|

*Full Time Equivalent

Cost Center Trend / Fire Operations



Fire and Rescue Emergency Management (6545)



| | FY 2015 Actual | FY 2016 Actual | FY 2017 Actual | FY 2018 Adopted | % Change |
|----------------------|-------------------|-------------------|-------------------|----------------------------|-------------|
| Personal Services | \$ 98,140 | \$ 88,148 | \$ 112,982 | \$ 113,997 | 1% |
| Materials & Services | 11,063 | 10,349 | 10,412 | 12,292 | 18% |
| Total | \$ 109,203 | \$ 98,497 | \$ 123,394 | \$ 126,289 | 2% |

| Positions Approved* | 2 | 2 | 2 | 2 | 0% |
|---------------------|---|---|---|---|----|
|---------------------|---|---|---|---|----|

*Full Time Equivalent

